

Getac

Windows®. Life without Walls™.
Getac recommends Windows 7.

Uncompromised Performance to Boost Work Efficiency

A Powerful Tool for Professionals

Getac S400
Semi-rugged Notebook



S400

Semi-rugged
Notebook

 **RedLinX™**
Embedded Solutions

www.redlinx.co.za

Rugged Mobile Computing Solutions



QuadraClear™
Technology



Discrete
Graphic Engine



Glove
Multi-touch



GPS



Backlit
keyboard



Serial Port

- Built-in GPS and Wireless Access
- Getac QuadraClear™ Sunlight Readable: Up to 700 Nits
- Resistive Type Multi-touch Display
- Full-sized Backlit Keyboard with Adjustable Backlight
- Powerful Quick Keys for Instant Access
- MIL-STD-810G and IP5X Certified
- Optional NVIDIA® GeForce® G310M 512MB VRAM
- Optional Low Temperature Module



Getac S400 is a splash, dust and drop-shock resistant notebook with MIL-STD-810G certification and IP5X rating. It comes with an optional low temperature module to allow operation in environment where the temperature is as low as -15°C. Designed to survive harsh conditions, S400 is built with KryptoShell™ chassis for comprehensive protection; its sealed I/O ports shield the connectors against external impact. Users can also appreciate its quick keys feature that allows switching between programs or operation modes with one easy keypress. The backlit keyboard with adjustable backlight provides improved visibility in low light environment, and the ergonomically designed full-sized keyboard contributes to efficient data input, resulting in enhanced work efficiency.

Powered with Intel® Core™ processor and Intel® vPro™ technology, S400 brings users speed and data security. Its remote management feature ensures maximum protection of critical information. The device also boasts a built-in webcam, a GPS receiver, Bluetooth, WLAN and WWAN connections with the option of an in-car dual pass-through antenna connector, to offer users seamless communication on the go.

Interface



Back Side

- DC in Jack x 1
- USB 2.0 x 1
- Serial Port x 1
- LAN (RJ45) x 1
- External VGA x 1



Left Side

- Audio Output x 1
- Microphone x 1
- USB 2.0 / eSATA Combo x 1
- Multi Memory Card Reader x 1
- USB 2.0 x 2
- IEEE 1394a x 1



Right Side

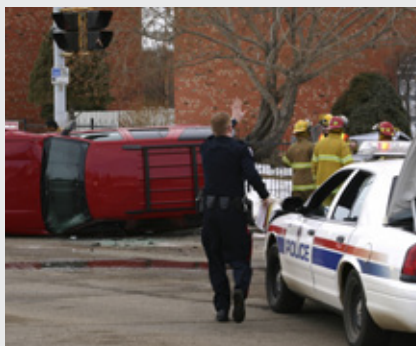
- Smart Card Reader x 1
- Battery Pack x 1
- PCMCIA x 1
- ExpressCard/54 x 1
- Optical Drive x 1

Industry Applications



Field Service

S400 combines both sturdiness and mobility. Its comfortable handle allows users to bring the device with ease to service sites to carry out maintenance, repair, inspection, or exploration work. The resistive multi-touch display presents a convenient, agile and user-friendly operating interface with streamlined process. Via wireless connection users can link to control center to access or transmit critical data, achieving greater efficiency through reduced idle capacity in each stage of the process.



Public Safety

S400 incorporates two special quick keys that allow the machine to enter "Blackout" or "Emergency" mode to assure safety of users under extraordinary conditions. In critical situations, pressing the "Blackout" key would instantaneously turn off all device lighting. The "Emergency" key is designed for users to page control center for support, enabling swift response to unforeseen situations to better protect human lives.



Government

Also fulfilling every requirement for an indoor environment, Getac S400's Intel® Core™ processor and 14-inch screen guarantee both functionality and comfort necessary for office work. Understanding the importance of information security and confidentiality for government agencies, S400 features cutting-edge data protection technologies, such as Intel® vPro™ and TPM 1.2, as well as an identification system with smart card reader and fingerprint authentication to safeguard critical information.

Optional Accessories



Office Dock

W x D x H: 288 x 172.5 x 53.5mm
(11.34" x 6.8" x 2.11")

- USB 2.0 x 3
- Audio Output x 1
- Microphone x 1
- DC in Jack x 1
- LAN (RJ45) x 1
- PS/2 x 2
- USB / eSATA Combo x 1
- External VGA x 1
- DVI x 1
- DisplayPort x 1
- Printer Port x 1
- Serial Port x 2



Carrying Bag



Battery Charger



Main Battery / Low Temperature Battery (7800mAh)
Lightweight Battery (5200mAh)



AC Adapter
(90W, 100-240VAC)



Vehicle Adapter
(90W, 11-16VDC
and 22-32VDC)



Stylus



Optical Drive
Weight Saver

Specifications

Operating System	Genuine Windows® 7 Professional	Communication Interface	10/100/1000 base-T Ethernet Intel® Centrino® Advanced-N 6200; 802.11 a/b/g/n Optional Bluetooth (v2.1+EDR class 2) Optional GPS Optional Gobi™2000 mobile broadband
Mobile Computing Platform	Intel® Core™ i5 Technology - Intel® Core i5-520M Processor 2.4GHz, Max. 2.93GHz with Intel® Turbo Boost Technology - 3MB L3 Intel® Smart Cache - Mobile Intel® QM57 Express chipset - Optional vPro™ Technology Intel® Core™ i3 Technology - Intel® Core i3-350M Processor 2.26GHz - 3MB L3 Intel® Smart Cache - Mobile Intel® QM57 Express chipset	Software	Getac Utility Adobe® Reader® CompuTrace® Compatible BIOS
VGA Controller	Intel® Graphics Media Accelerator HD ⁱ Optional NVIDIA® GeForce® G310M 512MB discrete graphic controller	Security Feature	Optional Intel vPro™ Technology TPM 1.2 Fingerprint scanner Smart card reader Kensington lock
Display	14" TFT LCD HD (1366 x 768) Standard Anti-reflective / Anti-glare display Optional 700 nits QuadraClear™ sunlight readable display with multi-touch screen	Power	AC adapter (90W, 100-240VAC, 50 / 60Hz) Battery ⁱⁱ - Li-Ion smart battery (7800mAh) - Low temperature Li-Ion smart battery (7800mAh) - Optional lightweight Li-Ion smart battery (5200mAh)
Storage & Memory	2GB DDR3 expandable to 8GB SATA HDD 320 GB Optional SATA SSD 80GB	Dimension (W x D x H) & Weight	348 x 258 x 49.2 mm (13.7" x 10.15" x 1.93"), 2.9 kg (6.4 lbs) ⁱⁱⁱ
Keyboard	Membrane keyboard Optional LED backlit membrane keyboard	Rugged Feature	MIL-STD-810G and IP5X certified Keyboard splash resistant Sealed ports and connectors Shock-protected removable HDD Vibration & drop resistant
Pointing Device	Touchscreen - Optional pressure sensitive multi-touch screen Touchpad - Glide touchpad with scroll bar	Environmental Specification	Temperature ^{iv} : - Operating: 0°C to 45°C / 32°F to 113°F - Optional low temperature: -15°C to 45°C / 5°F to 113°F - Storage: -40°C to 71°C / -40°F to 160°F Humidity: - 95% RH , non-condensing
Expansion Slot	PCMCIA Type II x 1 + ExpressCard/54 x 1 Optional PCMCIA Type II x 2 Multi Memory Card Reader x 1		
Multimedia Bay	DVD super multi drive Optional optical drive weight saver		
I/O Interface	Optional 1.3M pixels webcam x 1 Serial port (9-pin; D-sub) x 1 External VGA (15-pin; D-sub) x 1 Microphone (Mini-jack) x 1 Audio output (Mini-jack) x 1 DC in Jack x 1 USB 2.0 (4-pin) x 3 USB 2.0 / eSATA Combo x 1 LAN (RJ45) x 1 IEEE 1394a x 1 Docking connector (144-pin) x 1 Optional RF antenna pass-through for GPS and WWAN		

- i Share memory size may vary by different operating system and RAM size.
- ii Battery life testing conducted under BatteryMark 4.0.1. Battery performance will vary upon software applications, wireless settings, power management settings, LCD brightness, customized modules and environmental conditions. The battery has a limited number of charge cycles and may eventually need to be replaced by a Getac service provider. Battery life and charge cycles vary by use and settings.
- iii Weight varies from configurations and optional accessories.
- Standard display: 2.9 kg - 3.2 kg (6.4 lb - 7 lb)
- QuadraClear™ sunlight readable display with touchscreen: 3.4 kg - 3.6 kg (7.4 lb - 8 lb)
- iv Tested by a national independent third party test lab following MIL-STD-810G.



Getac EUROPE

Germany Office -
Getac Technology GmbH
Kanzlerstrasse 4
40472 Düsseldorf, Germany
Tel: +49 211 984 8190

Italy Office

Tel: +39 02 36539562

UK Office - Getac (UK) Ltd.

Mitac house, Nedge Hill, Telford,
Shropshire, TF3 3AH, U.K.
Tel: +44 1952 207 231

Getac NORTH AMERICA

USA Office - Getac Inc.

43 Tesla, Irvine, CA 92618, USA
Toll Free: +1 886 GO GETAC
(1 886 464 3822)

Getac ASIA

China Office - Getac Mobile Ltd.

- Kunshan Office:
No.300 (Building, Processing Zone),
No.1 Avenue, Export Processing
Zone, Changjiang South Road,
Kunshan City, Jiangsu, China
Tel: +86 512 57366000 # 1408
Fax: +86 512 57382090

- Shanghai Office:

2/F, No.213, Jiangchang Third Road,
Zhabei District, Shanghai, China
Tel: +86 21 61431188 # 1032
Fax: +86 21 61401023

- Beijing Office:

Room 501, Haowei Building,
No.25 Beitai Pingzhuang Rd.,
Haidian District, Beijing, China
Tel: +86 10 62381104
+86 10 62381108 # 2040

Japan Office -

MiTAC Japan Corporation

Yasuda 8th Building 6F,
Kaigan 3-chome 3-8, Minato-ku,
Tokyo, 108-0022, Japan
Tel: +81 3 3769 8311 # 6411

Taiwan Office -

Getac Technology Corporation

5F, Building A, No. 209,
Section 1, Nangang Rd.,
Nangang Dist., Taipei City,
11568, Taiwan, R.O.C.
Tel: +886 2 2785 7888

SALES CONTACT

North America

ruggedsales@getac.com

South America

sales-getac-SAmerica@getac.com

EMEA

sales-getac-EMEA@getac.com

- Germany:
sales-getac-DACH@getac.com

- Italy:
sales-getac-Italy@getac.com

- UK:
sales-getac-UK@getac.com

Asia Pacific

sales-getac-APAC@getac.com

- China:
sales-getac-China@getac.com

- Japan:
sales-getac-Japan@getac.com

MARKETING CONTACT

Global

Globalmarketing@getac.com

North America

NorthAmericamarketing@getac.com

South America

SouthAmericamarketing@getac.com

EMEA

EMEAmarketing@getac.com

Asia Pacific

APACmarketing@getac.com

www.getac.com

Copyright © 2011 Getac Technology Corporation and/or any of its affiliates. All Rights Reserved. All specifications are subject to change without notice.
V05M02Y11