

**Four windows plus live background**

**DVI, RGB, HD inputs**

**NTSC/PAL multi-format video switcher option**

**Smoothly scalable windows**

**HDCP option**

**DVI input cable equalization**

**Ethernet and RS-232 control**

**Pan and zoom**

**Variable aspect ratio**

**10 bit pixel processing**

**Compact 1 RU chassis**

**RGB and DVI outputs**

**Titles and borders**

**50 programmable presets**

**Resolutions to 1920x1200p, and 2048x1080p**

**On-screen cursor control**

**NTP clock option**

**KVM option (see pg. 10)**

## MEDIUM MULTIVIEWERS

### COMPUTER & VIDEO SOURCES ON A SINGLE SCREEN



[www.redlinx.co.za](http://www.redlinx.co.za)

#### QuadView HDx

**4 Window Multiviewer**

The QuadView® HDx offers the most powerful image processing available in a compact multiviewer, with outstanding image quality, web-based control, dynamic window sizing, borders and titling, smooth zoom/pans and more. It is ideal for any application requiring display of multiple images on a monitor or projector.

The QuadView HDx accepts high resolution DVI, RGB, and HD, and optionally, S-Video, component and NTSC/PAL composite video signals, any four of which can be displayed simultaneously. A live background is also available. The QuadView HDx produces the highest quality graphics and HD rendition, with state-of-the-art deinterlacing and scaling. Picture quality sets a new standard for the industry.

The optional video switcher accepts up to sixteen video inputs, user configurable as sixteen composite, eight S-Video or five component video inputs, in any combination. Up to sixteen video inputs can be cycled through a single window at user selected timing intervals.

The QuadView HDx supports real-time, dynamic movement and resizing of windows. Each input can be scaled and positioned anywhere on the screen, as well as panned and zoomed to emphasize areas of interest. Display alternatives are virtually infinite, and include quad split, side-by-side, picture-in-picture, and overlapping windows.

User-selectable output resolutions of up to 1920x1200, 2048x1152, and 2048x1080p ensure a perfect match with any display. With DVI inputs and outputs, a completely digital signal path can be maintained from signal source to display. A live background can be input via a DVI interface.

An optional KVM capability provides control of any computer or network controllable device displayed. SinglePoint KvM™ is RGB Spectrum's patent pending implementation of traditional KVM. With full bandwidth video directly connected to the processor, only control signals are passed over the network. This implementation guarantees real time video performance, unavailable in other systems.

All functions are easily set up and controlled using a command line interface from either an RS-232 or Ethernet port, or graphically via a standard web-browser.

Built on RGB Spectrum's long tradition of quality and reliability, the QuadView HDx is an excellent solution for all multimedia display, including the most demanding mission critical applications. It is packaged in a space saving 1 RU enclosure.



- Control rooms**
- Network operations centers**
- Video teleconferencing**
- Security / surveillance**
- Operating rooms**

**Specifications**

Order #                      QV HDx 4/0                      QV HDxv 4/0

**Input Signals**

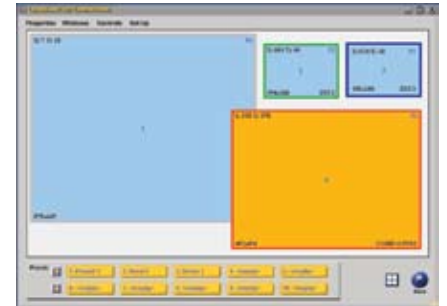
Number/type	4x RGB/HD (YPbPr) 4x DVI 1x DVI background input Up to 16 x composite video; also configurable as up to 8x S-Video or up to 5x component (QV HDxv)
Resolution	640x480 to 1920x1200 and 2048x1152 720p, 1080i, 1080p and 2048x1080p
Horizontal scan rate	12 kHz to 125 kHz interlaced or non-interlaced
Frame rate	Up to 100 Hz
Video levels	0.7 V p-p
Sync type	Sync on green, tri-level sync (HD), separate composite sync, or separate H-drive and V-drive
Cable equalization	Automatic or manual: up to 164 feet or 50 meters
Connectors	RGB: 15-pin HD D-Sub (female) DVI: 29-pin DVI-I (digital only) Video: BNC (female)

**Output Signal**

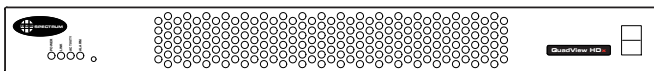
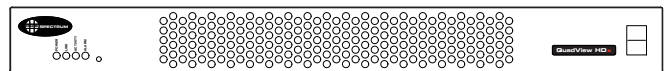
Number/type	1x RGB/HD (YPbPr) analog 1x DVI digital
Resolution	640x480 to 1920x1200 pixels and 2048x1080p (progressive)
Horizontal scan rate	12 kHz to 125 kHz
Frame rate	Up to 100 Hz
Video levels	0.7 V p-p
Sync type	Sync on green, tri-level (HD only), separate composite sync, or separate H-drive and V-drive
Connectors	29 pin DVI-I, DVI/RGB/HD (YPbPr)
Pin power	750 mA @ 5VDC

**Other**

Power	100-240 VAC auto ranging 50 Hz-60 Hz < 45 W
Control	Ethernet 10/100 BASE-T RS-232 Web interface
Size	1 RU Width 17.00"/43.2 cm Depth 13.5"/34.3 cm Height 1.75"/4.5 cm
Rackmount kit	Included
Weight	Approximately 13.5 lbs/6.1 kg


**QuadView HDx Web Interface**

Operate the processor's display capabilities remotely from any web browser.


**QV HDx**

**QV HDxv**
